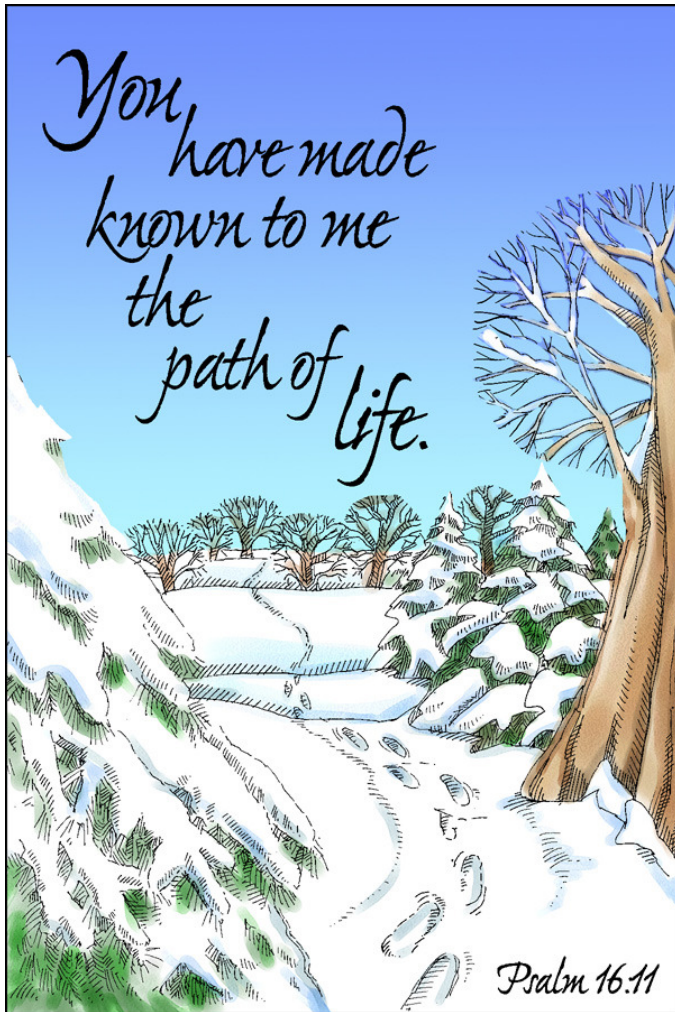


The Carriage Stone

January 2011

New Hempstead Presbyterian Church, New City, NY.
The English Church



Pastor

Pastor's Message 2

Mission

Youth Food Drive 3

Christmas Joy Offering 3

Per Capita 3

Life of the Church

Women's Group 3

"The Carriage Stone" is the Newsletter of

The New Hempstead Presbyterian Church

484 New Hempstead Road, New City, NY 10956

The Reverend Doctor Lori Knight-Whitehouse, Pastor

Office: (845) 354-2372

E-mail: office@nhpchurch.org

Web: nhpchurch.org

Newsletter Editor:

Robert Philhower

Next Deadline:

Sunday, February 13

Submissions: in my mailbox
or e-mail to

carriagestone@nhpchurch.org



FROM THE PASTOR


Midway between New Year and Lent

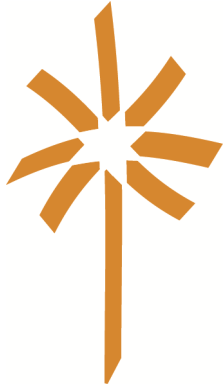
By the time you read this, we will be close to halfway between Christmas and Lent! Hard to believe, but the Church year rolls on swiftly. I offer you the following prayer, by the American pastor and theologian Harry Emerson Fosdick (1879-1969), as it embodies New Year's ideas which also apply to Lenten discipline.

O God, who inhabitest eternity, whose name is holy, with hushed spirits in the quiet of thy sanctuary we wait the closing moments of another year. We recall the failures of the past, the broken hopes and disappointed ambitions, our sins against ourselves and others and the transiency and vicissitudes of our lives. We confess the unworthy living that has stained the record of the year that is now dying. Grant us honesty to face ourselves before we confront another twelvemonth. Save us from self-deceit, mean excuses, unwanted evasions, and prepare us with inner integrity and spiritual resource, that we may be adequate for all that lies before us. Deliver us from cherishing ill will in a world that perishes for want of good will, from selfishness in a world whose need of generosity and magnanimity is deep and desperate, from so living that Christ shall be crucified again and the Kingdom of God delay its coming. Confirm now in each of us some worthy decision. Bring us to the New Year's beginning with such vision of our duty, such resolution to perform it, and such resources for its consummation that whether the year ahead we live or fall asleep, we shall be undishonored and unashamed before Thee.

Through Jesus Christ our Lord.
Amen.

Blessings for the year ahead!





Christmas Joy Offering

From Mark Zacheis

The Christmas Joy offering goes in part to augment the retirement income of ministers in need. Giving in honor of those ministers who have influenced our lives so greatly puts a face to this offering. We'd like to thank Laura Bidon and others who did such an eloquent job of sharing those that they honor with a gift to the Christmas Joy. This year we collected \$832.



Youth Food Drive

From Mark Zacheis

Many thanks to all for your generous contributions to the Youth Group Food Drive. Over the past year, we collected 1080 pounds of food for the People to People food pantry in Nanuet. The food drive is ongoing and there is an ever-present need, so check your weekly bulletin and see what we're looking for this time around. As always, any kind of food donated is greatly appreciated and graciously accepted. This month's focus is on comfort food – canned stew, canned chili and canned soup.

Woman's Group Starting

From Carmen Bermudez

We are starting a Woman's Group, which will meet every third Friday of the month. The first meeting will be held in my home Friday, February 18 starting at 7:30 PM.

Anyone interested can call me (845) 634-1321 or see me at church on Sunday. All are welcome.

Per Capita

From Mark Zacheis

Do you wonder what the blue envelope marked Per Capita in the front of your new box of envelopes is for? Well, every year our church reports on the number of active members we have in our congregation, and every year we are assessed an amount per active member. As Presbyterians, we are not just members of our local church but are also members of the larger church. We're members of the Hudson River Presbytery, the Synod of the Northeast, and of the General Assembly. These bodies are very important, as they bond together our church with all of the others in the county, the region, and nationally. The funds that we send go toward the ongoing operations of support and outreach provided by these bodies. For example, our Presbytery is providing funds to pay for a leader of the Joint Youth Group (whose members include the young people that go to Germonds, Central Presbyterian Church in Haverstraw, Stony Point Presbyterian and our church).

You could consider the Per Capita to be your dues for being a member of the greater Presbyterian Church. This year the assessment is \$28 per person. Our church will write a check for \$3276 to cover all of our active members. We encourage you to consider writing a check to our church to cover the cost of the members of your family.